

ZD® 中大力德
Stock Code: 002896



COOPERATION MUTUAL WINNING

ZD REALIZES THE INFINITE POSSIBLE IN
AUTOMATION APPLICATION.

ZHONGDA LEADER

NINGBO ZHONGDA LEADER INTELLIGENT TRANSMISSION CO.,LTD.

Add: NO.185 1st Xinxing Road, New Industrial Zone, Cixi City,
Zhejiang, China.

ZHONGDA CHUANGYUAN PRECISE TRANSMISSION EQUIPMENT CO.,LTD.

Add: No.159 Jinci Road, Hangzhou Bay District, Cixi City, Zhejiang, China.

International trade department:

Tel: 86-574-63530538 Fax: 86-574-63534879

E-mail: manager@zd-motor.com

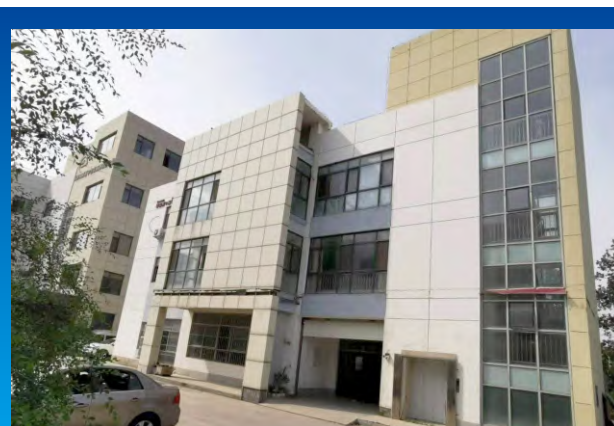
E-mail: trade@zd-motor.com



RoHS

Company Profile

Ningbo Zhongda Leader Intelligent Transmission Co.,Ltd. Headquarters



Ningbo Zhongda Leader Intelligent Transmission Co.,Ltd. Tian Jin Office

Established in August 2006, Ningbo Zhongda Leader Intelligent Transmission Co., Ltd. is an mechanical&electrical automation enterprise integrating R&D, manufacturing, sales and service of motor drive, micro-motor and precision reducer. Zhongda has 2 branch companies, 3 subsidiaries, more than 1,000 employees, registered capital of 80 million yuan, covers an area of 100 acres; August 29, 2017, Zhongda went public in the Shenzhen Stock Exchange SME board A-shares

(stock code 002896); 2018 Zhongda achieve revenue income of 599 million yuan.

Zhongda is a state-level high-tech enterprise, leading and participating in the drafting of 6 national and industry standards, 2 “Zhejiang Manufacturing” standards, 87 patents, and a Zhejiang province-level enterprise R&D center. The leading products are identified as “Zhejiang Famous Brand Products”.

Zhongda is based on being a manufacturer and

Ningbo Zhongda Leader Intelligent Transmission Co.,Ltd. Hang Zhou Bay Subsidiary



Ningbo Zhongda Leader Intelligent Transmission Co.,Ltd. Dong Guan Office

solution providers of intelligent, automated equipment core components. Through independent research & development and cooperation with research institutes and universities, Zhongda has formed a major product group of nearly thousand varieties, including micro DC gearmotors, micro AC gearmotors, and small AC gearmotors, planetary gearboxes, precision cycloidal pinwheel gearboxes, motor controllers and other product lines.

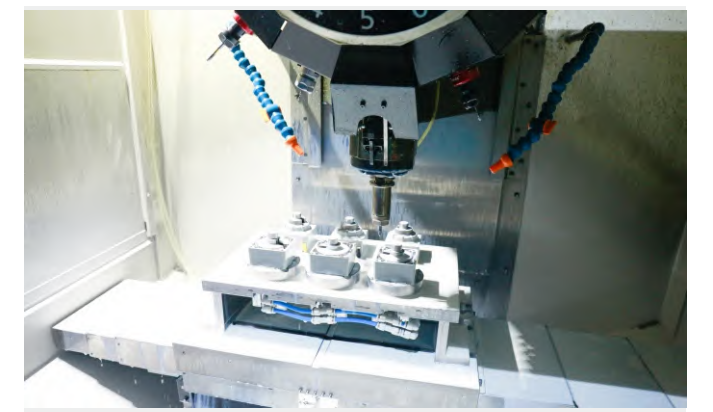
With its advantage of differentiation and high

cost performance, Zhongda's products are widely used in industrial robots, intelligent logistics, new energy, work machine and other fields, as well as food, packaging, textile, electronics, medical and other special machinery and equipment. On the basis of the realization of replacing imported products in China, we will gradually participate in international competition.

CNC Machining Center



CNC Machining Center



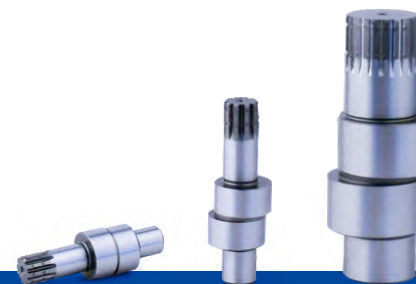
CNC Machining Center



Vertical Milling



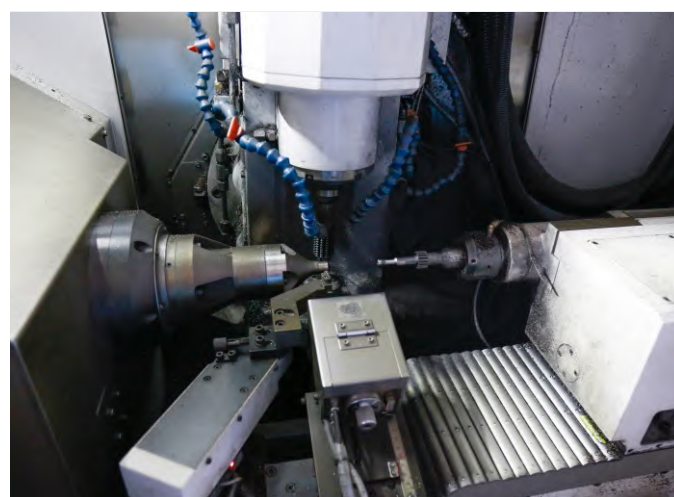
Crank Shaft Grinding



Gear Grinding Machine



Hobbing Machine



Rolling Machine



Gear Shaping
Machine



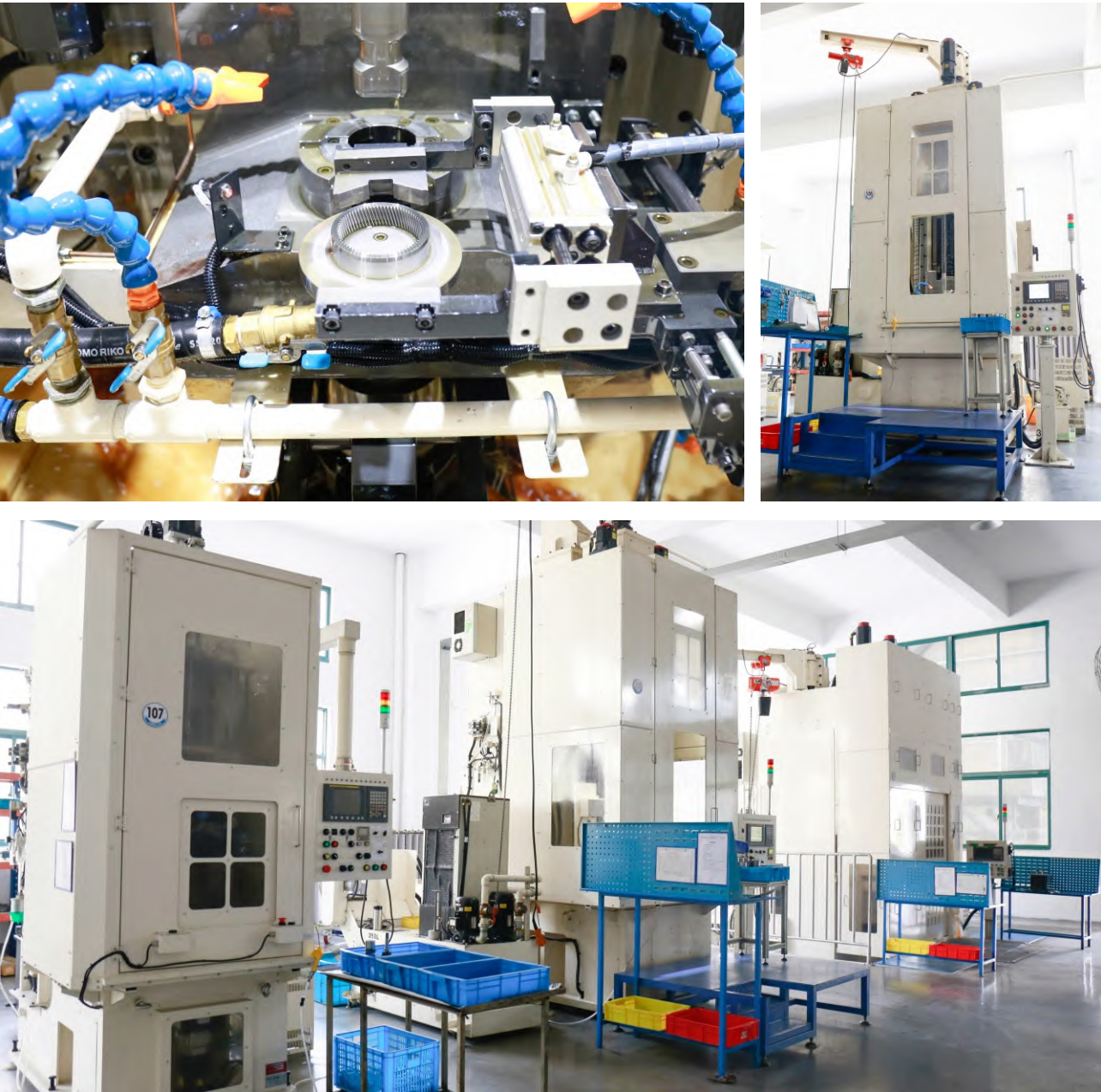
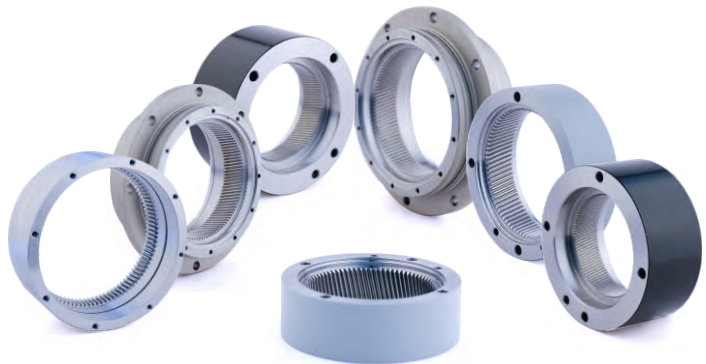
Internal Grinding



Milling
Machine



Spiral Broaching
Machine



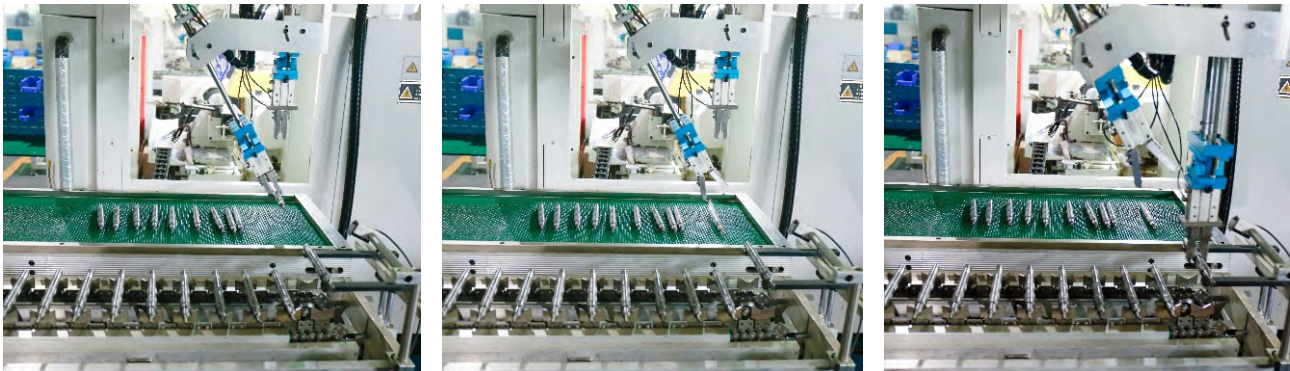
Five-axis Hobbing Machine



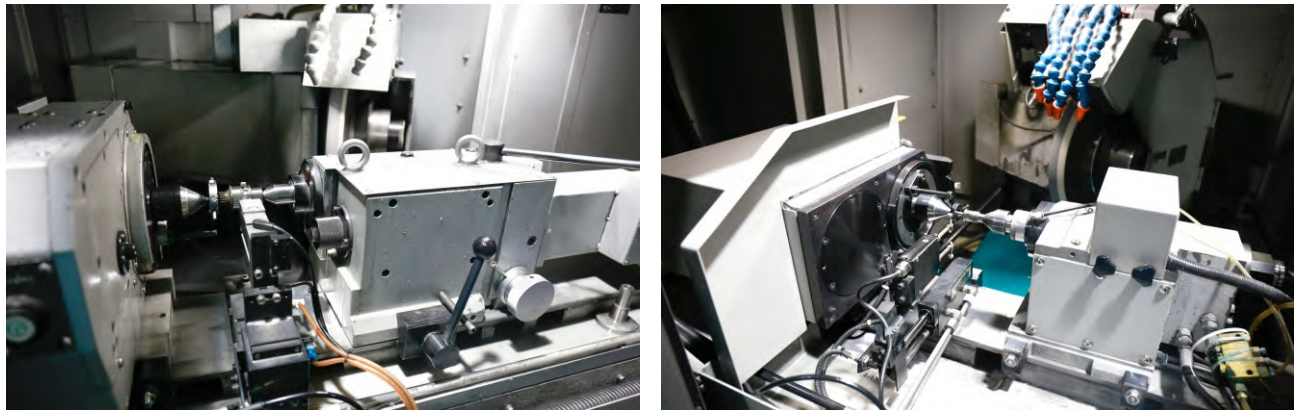
Gear Grinding Machine



External Grinding



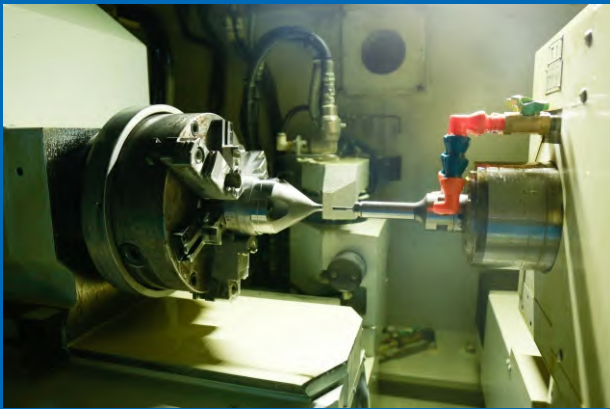
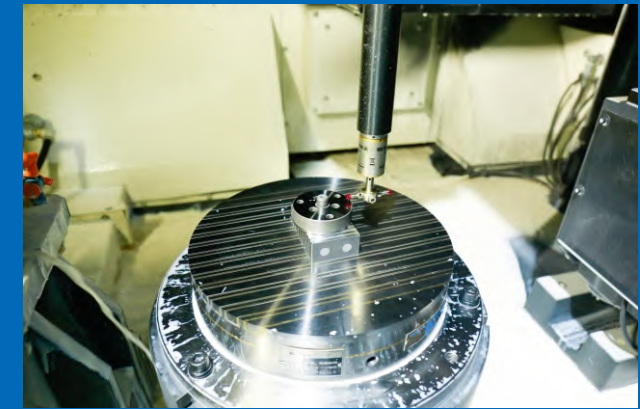
External Grinding



Soft Machining Line



Tooling Compound
Grinding



CNC
Machine



Punch



Winding Machine



Coil Inserting Machine

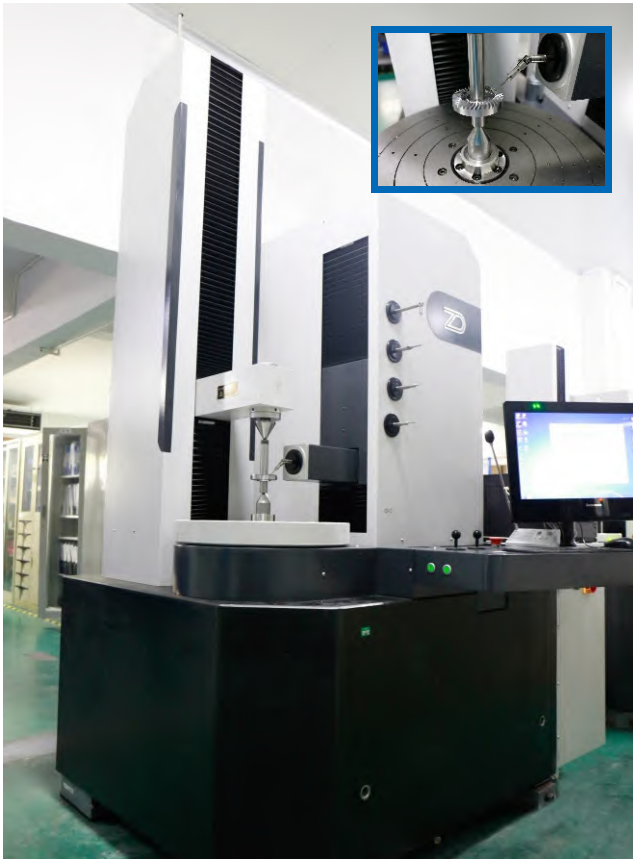


Gear Measurement Center



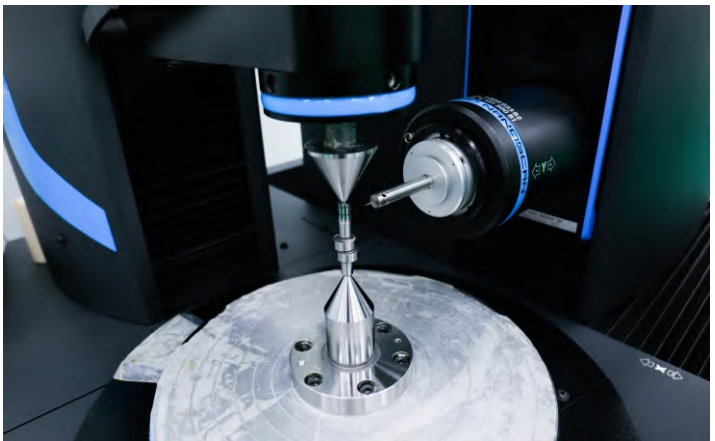
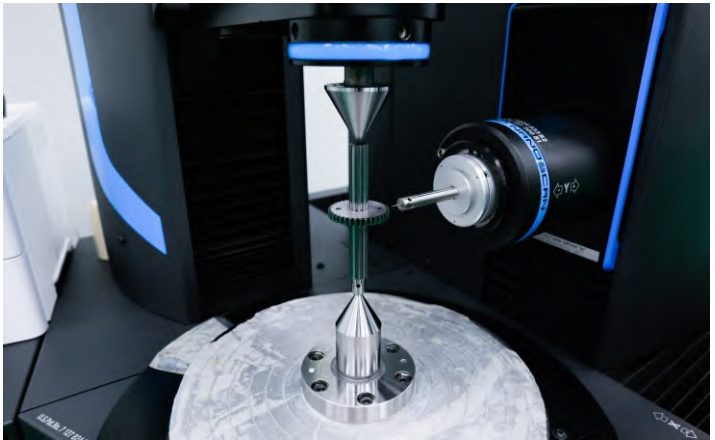
◀ 圆柱齿轮测量

▼ 锥齿轮测量



▼ 内齿轮测量

Gear Measurement Center



Three Coordinates

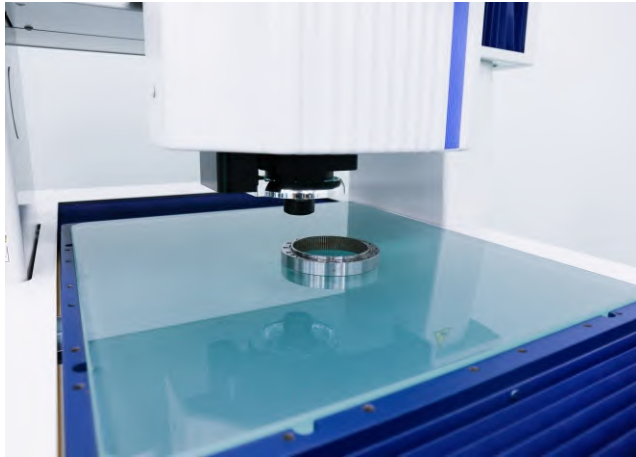


Three Coordinates

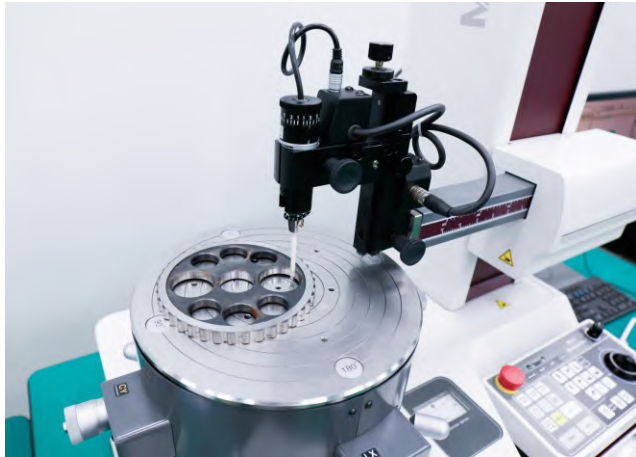
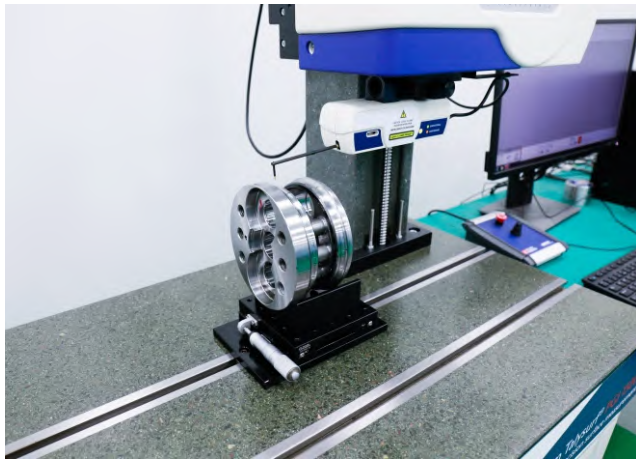


Cycloidal Pin Wheel Precision Reducer

▼ Measuring Instrument



▲ Profiler



▲ Roundness Meter

Metrology Center



◀ Tensile Testing Machine

▼ Length Measuring Instrument



▼ Microhardness Instrument



▼ Full-phase Microscope



▼ Spectrometer



Nitriding Furnace



High Frequency Quenching Machine



Assembly Line



Assembly Line



Assembling



Assembling



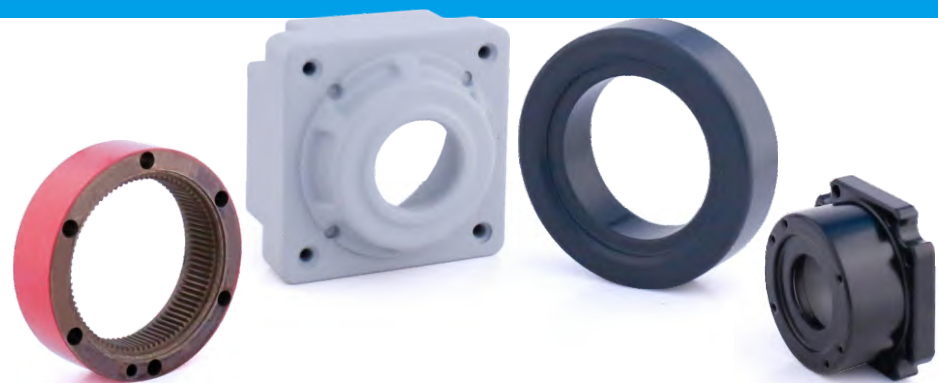
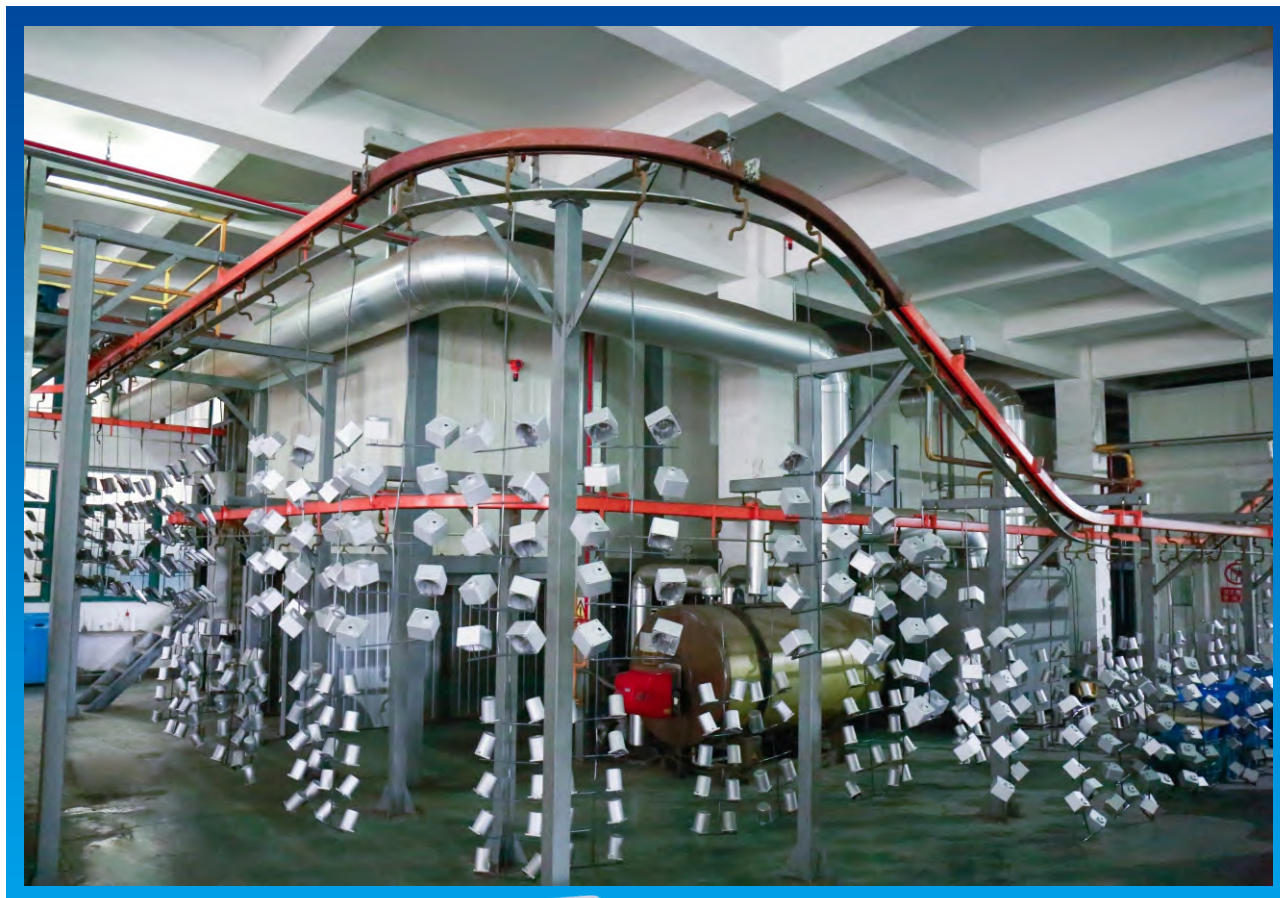
Factory Testing



Type Testing



Spray Painting



Intelligent Storage



Product Introduction

Small AC Gear Motor

Small AC motor has vertical and horizontal types, output power from 100W to 3700W single phase and three phase, the gear ratio from 1:3 to 1:750, the advantage is low noise, long life and so on.



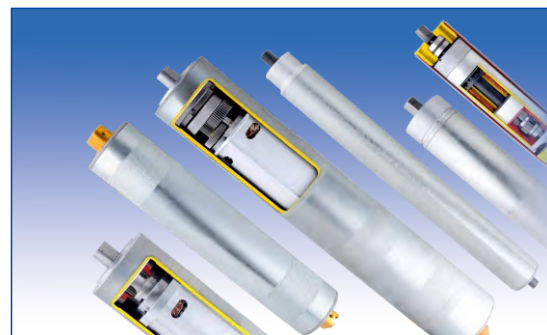
Transmission Planetary Gear Motor

Transmission planetary gearbox can match with AC, DC BLDC STEPPING motor, the advantage is long life, low noise, high torque. The first stage can be helical gear and spur gear, the mounting size is 32mm, 42mm, 52mm, 62mm, 72mm, 82mm, 105mm, 120mm.



Roller Motor

Roller motor is the motor and gearbox inside of drum, the size is 42mm, 50mm, 60mm, 80mm, 113mm, 138mm, 165mm, the output power from 20W to 2200W, the voltage has single phase, three phase, dc low voltage.



Hypoid Gear Motor

Hypoid gearbox, the size is the same as RV worm gear, the advantage comparing with worm gear is high torque, high transmission efficiency, long life, and so on, the shaft has solid shaft and hollow shaft.



ZDF2/ZDF3 Hypoid gear motor

ZDF2/ZDF3 hypoid gear motor is a combination of motor and hypoid gear box, which is widely used in CNC machine tools, packaging machinery, production lines and so on. The utility model has the advantages of small volume, low noise, high efficiency, long life-time, diversified outlet shafts and saving installation space in segments. Power: 15-2200W, AC input power supply can single-phase and three-phase, gear ratio 5-240k.



AC Gear Motor

AC motor can be divided into induction motor, reversible motor, torque motor, speed adjustable motor, brake motor. Which advantages are high efficiency, low temperature, low noise and long life.



Product Introduction

ZDE/ZDF(S) Precision Planetary Gear Box

High precision planetary gearbox matches with servo motor which can be used in many fields of control. The backlash $\leq 8\text{arc-min}$, transmission efficiency up to 96%, the size: 40mm, 60mm, 80mm, 120mm, 160mm, ratio from 1:3 to 1:512. ZDS series size 90mm, 115mm, 142mm, 190mm, ratio from 1:3 to 1:100.



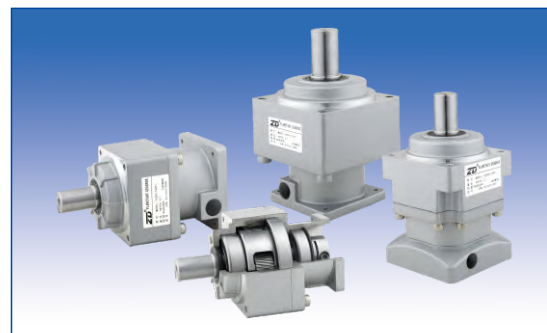
ZB/ZE/HD Precision Planetary Gear Box

High precision planetary gearbox, the gear is helical, can be matched with servo motor, which can be used in many fields of control. The backlash $\leq 3\text{arc-min}$, transmission efficiency up to 96%, the mounting size. ZB: 060, 090, 115, 142, 180, 220mm. ZE: 070, 090, 120, 155, 205, 235mm, the ratio from 1:3 to 1:100.



ZDR/ZDG(F) Precision Planetary Gear Box

High precision planetary gearbox, the gear is helical, the backlash $\leq 5\text{arc-min}$, transmission efficiency up to 96%, the mounting size ZDR: 52mm, 78mm, 98mm, 125mm. The ratio from 1:3 to 1:81, ZDG: 60mm, 90mm, 120mm, 170mm, the ratio from 1:3.67 to 1:100.



Brushless DC Gear Motor



DC brushless motor consists of motor and driver, the advantage is small size, low noise, high efficiency, wide speed range, mounting size: 60mm, 80mm, 90mm, 104mm, output power from 10W-400W.

DC Gear Motor



DC motor has five sizes, more than 300 types, can work smoothly low noise, high starting torque, high efficiency, long life, output power from 6W to 300W, voltage from 12V to 220V.

RV Planetary Gear Box



RV planetary gearbox is a main parts of robot arm which is widely used to in machine tools, medical instruments and other automation equipment. The advantage is saving mounting space, high rigidity, high precision, high efficiency. The backlash is $\leq 1\text{arc-min}$.